

Newsletter
February 2014

If you haven't paid your subscription for 2014 yet, remember that it was due in January. Better get the renewal form off to Louise right away!

Aberdeen and District Beekeepers' Association



Established 1910
Scottish Charity Number SCO31754

President:

Mr R Wood
Cothal Lodge
Cothal
Dyce

Chair:

John Cooper
9 Westburn Drive
Aberdeen
Tel. 01224 637774

Hon. Secretary:

Rosie Crighton
29 Marcus Cres.
Blackburn
AB21 0SZ
Tel. 01224 791181
e-mail:
aberdeenbeekeepers@gmail.com

Hon. Treasurer:

Louise Forbes
56 Morningfield Rd
Aberdeen
AB15 4AQ
Tel. 01224 313096

Area SBA Rep:

Stephen Palmer
Tel.01888 551367
e-mail:
palmers@fintry.plus.com

SNIPPETS FROM THE CHAIR

- The Completion Certificate for the apiary cabin was received in January, and all the funding from the Aberdeenshire LEADER Programme and from Scottish Natural Heritage has now been received. ADBKA is very grateful to both of these organisations for their help and support.
- The response to last month's call for volunteers to help with routine hive monitoring and management at the Crathes apiary has been very encouraging. Over 30 people have indicated a willingness to help according to their availability. Between them they cover a full range of beekeeping experience and expertise, from novice upwards. This routine work will be supervised by two Team Leaders, Graham Torrie and Gordon Stephen who will be ably supported by Hugh Donohoe and Graham Stables. The apiary programme will be moved forward in mid to late April. Thank you to everyone who has agreed to participate.
- There has been only modest response to last month's call for contacts to organisations, groups and schools which might be interested in receiving a talk on bees and beekeeping. Anyone who knows of such a group or school, please get in touch with me. (j.cooper@clara.net Tel. 01224 637774)
- I repeat my point made last month about the likely need for new committee members after the AGM in May. Please get in touch if you would like to discuss committee membership.
- Various tidying up jobs at the new apiary are underway, and the plan is to have things in good order for the official opening of the apiary in May. Thanks are due to Graham Torrie, Witek Mojsiewicz, Neil Murray and Rob Peaker for their help with groundwork improvements, and to Sandy Gordon for a generous supply of wood chips. Thanks also to Alex Innes for work on fixing posts for the new notice board which will soon be in place.
- I would be very appreciative if any member who has first aid qualifications and/or first aid training could please to get in touch. (j.cooper@clara.net tel. 01224 637774)



A chip on its shoulder. See p.3

John Cooper

In the Newsletter this month:

From the Chair	1
BBKA Convention	1
Members' Events	2
Bee Diseases Regs.	2
The Honey Stomach	3
Honey Jar Store	3
Notice Board	4
BeeBase	4
According to.....	4

This April, why not take a trip down to the British Beekeepers' Association's Spring Convention - probably the biggest beekeeping event in Europe?

Harper Adams University
Newport, Shropshire, TF10 8NB
Friday 4 April - Members' Day and Trade Show
Saturday 5 April - Public Day and Trade Show
Sunday 6 April - Education Day



Spring 2014 Convention

With more than 30 lectures from international and leading UK speakers and nearly 40 workshops and courses during the 3 day event, there is something for everyone, expert, improver, beginner and non-beekeeper.

Find out more at http://www.bbka.org.uk/news_and_events/spring_convention.php

Members' Events

TALK:

HONEY BEE HEALTH in SCOTLAND TODAY**- with Steve Sunderland, Lead Bee Inspector for Scotland**

Saturday 15 March at 2.00pm

The Kinellar Community Hall
Fintray Road
Blackburn AB21 0SS

We are very pleased indeed to welcome Steve to the north east and we hope that as many members as possible take the chance to come along to hear him talk about this important subject.

On 7 June, Steve will be running a 'Bee Health Day' in the East of Scotland at a venue to be announced. Perhaps we can find out more when he visits.

**MEMBERS' FORUM:
SWARM MANAGEMENT**

Saturday 12 April at 2.00pm

The Kinellar Community Hall
Fintray Road
Blackburn AB21 0SS**HALF-DAY PRACTICAL
WORKSHOP:****- assembly of frames, flat pack kit, making foundation, etc**

Saturday 26 April at 1.30pm

The Kinellar Community Hall
Fintray Road
Blackburn AB21 0SS

Beekeeping equipment will be available for purchase at this event

US and Chinese researchers have found that honey bees and Varroa mites have been infected with Tobacco Ring Spot Virus (TRSV), which was previously restricted to plants. A link has been made with TRSV and colony collapse disorder.

Read more at:

<http://mbio.asm.org/content/5/1/e00898-13.abstract?sid=97661b5e-a94d-47a7-af0e-658db6f9fa00>



The Scottish Beekeepers' Association has announced the details of its **2014 Autumn Convention**. The event will take place at the Scottish Rural College's Barony Campus near Dumfries on Saturday 27 September.

The main speakers will be:

Ian Molyneux – Regional Bee Inspector, North of England
Simon Rees – Federation of Irish Beekeeping Associations
Alan Riach – Scottish Beekeepers' Association

Tickets cost £30 and are available from Mike Thornley, Glentarn, Glentarn Road, Rhu, Helensburgh, G84 8LL

Contact Mike at masthome@dsl.pipex.com or telephone 01436 820493

An issue raised by Stephen Palmer at his excellent talk on bee diseases last weekend deserves wider circulation.

The Bee Diseases and Pests Control (Scotland) Order 2007 states that:

Any owner or person in charge of a hive who knows or suspects that – (a) any bees from the hive are infected with a notifiable disease; or (b) a notifiable pest is present in the hive; or (c) a notifiable pest is present on or in the same premises or vehicle as the hive, must immediately notify that fact to the Scottish Ministers.

- "notifiable disease" means American foul brood or European foul brood
- "notifiable pest" means the small hive beetle (*Aethina tumida*) or any species of the *Tropilaelaps mite*

The person to contact if you do "know or suspect" you have a problem is our local Bee Inspector and ADBKA member, Kirsty Sutherland. Kirsty is based at:

Scottish Government Rural Payments and Inspections Directorate, Thainstone Court, Inverurie, Aberdeenshire, AB51 5YA Tel: 01467 626222 Email: SGRPID.thainstone@scotland.gsi.gov.uk

In the US state of Illinois, July the 10th has been declared "Don't Step on a Bee Day".

Take a closer look at.....

.....the WORKER'S HONEY STOMACH

The foraging worker honey bee transports nectar and water in its honey stomach or crop. Back at the hive, its precious cargo is passed on to the house bees.

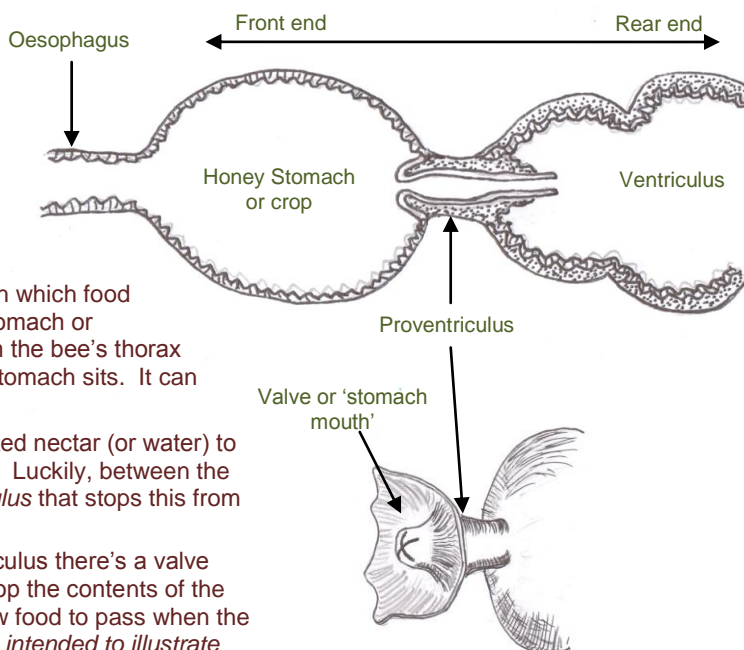
The honey stomach is an expandable sac at the end of the *oesophagus*, the muscle-lined tube through which food passes from the bee's mouthparts to its stomach or *ventriculus*. The oesophagus runs through the bee's thorax then into the abdomen, where the honey stomach sits. It can stretch to hold around 40mg of nectar.

Of course, the bee doesn't want the collected nectar (or water) to go directly from its crop into its ventriculus. Luckily, between the two, there's a device called the *proventriculus* that stops this from happening.

At the honey stomach end of the proventriculus there's a valve consisting of four 'lips', which can either stop the contents of the crop passing through or, alternatively, allow food to pass when the bee needs to eat. (See the lower drawing, intended to illustrate the honey stomach having been cut open to show the valve.)

Where the proventriculus enters the ventriculus the extended, tapered end acts as a non-return valve stopping any backward flow of the stomach contents.

Often, there will be pollen grains mixed in with the nectar. The hair-fringed lips of the proventriculus filter these out with a pulsing, 'gulping' action and pass them through to the ventriculus to be digested. In some older books, the valve is called the 'stomach mouth'.



Redrawn from Dadant (Ed.),
"The Hive and the Honey Bee"

Perhaps the most widely reported bee story over the past few weeks concerned a research project being carried out by Australia's national science agency, the Commonwealth Scientific and Industrial Research Organisation (CSIRO). They're looking at the impact of pesticides on the bees' ability to complete their tasks and the effect on honey production. This involves gluing microchips to the backs of 5,000 bees to monitor their behaviour. The 2.5mm x 2.5mm chips weigh 5mg (see the picture on the front page), and will track the bees' movements allowing the scientists to build up a 3-D image of their activities. The researchers are now looking to produce even smaller devices that can be fixed to insects such as flies and mosquitoes.

See how the Guardian reported the story at: <http://www.theguardian.com/environment/2014/jan/15/scientists-fit-honey-bees-with-tiny-sensors-to-study-decline-of-colonies>

Thanks to James Beattie for this item.



Visit the ADBKA Honey Jar Store for:

Ragus Candy
Apistan (10 strips, sufficient for 5 hives)
Ambrosia Syrup
Honey Jars and Lids
Mesh Floors – National size (wire only)
Hessian Squares for smoker fuel



Free loan of:
Honey extractors
Mini-melters
Heather honey press
Wax extractor
Wax foundation press

Approximately half a mile along Laurel Drive, turn into Laurel Place on your right - it's a semi-circle so take the second entrance into this street. Now turn left into Laurel Avenue. Danestone Market Garden is signposted, on the left, about 100 yards along.

**Danestone
Market
Garden
AB22 8AJ**

NB. Increased supply cost means that we have had to raise the price of candy to £5.50 per carton, making a box of four cartons £22.

For the loan items, a returnable £10 deposit is required, with the maximum length of loan being two weeks. **As other members may be waiting to borrow extractors, etc. these must be returned on time and in a clean condition.**

The store is open between 6.30pm and 8pm on Wednesday evenings and at other times by arrangement with Sandy Gordon (Tel: 01224 484540)

Notice Board



Abelo Beekeeping Equipment

Wide range of products & competitive prices

Please check our offers at www.abelo.co.uk

Contact Sebastian Bacz on 07508944101 or e-mail sales@abelo.co.uk

Aberdeen Bee Supplies

Jock McGregor is the local agent for Thorne Beekeeping Equipment. Contact him on 01224 790468 or e-mail:

AberdeenBeeSupplies@hotmail.com

FOR SALE

Beekeeping gear, including Langstroth brood and super boxes, frames, floors and roofs

Call Roger Seed on 01467 681623

Wanted

Water Boiler/Urn – Burco or similar

Contact Alex Innes on 01224 732765

9-frame radial extractor (electric) – FOR HIRE £10 per hire period

Steam wax melter – available ON LOAN £10 deposit

Both items available from: Jock McGregor, 11 Marcus Road, Blackburn. Tel. 01224 790468

I am looking for a local bee keeper from whom to purchase unpasteurised/microwaved/heat treated from hive to jar honey (obviously filtered) direct. I live in New Deer but am prepared to travel for the right product.

Many Thanks

Gerry

E-Mail gfwf@hotmail.co.uk
Mob 07526511535

A Message from the National Bee Unit

Knowing the distribution of beekeepers and their apiaries across the country helps us to effectively monitor and control the spread of serious honey bee pests and diseases, as well as provide up-to-date information in keeping bees healthy and productive. By telling us who you are you'll be playing a very important part in helping to maintain and sustain honey bees for the future.

Sign up by visiting **BeeBase** at www.nationalbeeunit.com or by phoning the National Bee Unit on 01904 462510. By letting us know that you keep bees and the location of your hives, you will be helping in our ongoing battle against disease and our efforts to sustain honey bee populations.

According to.....

..... German beekeeper, Herr Hilbert, as reported in the *British Bee Journal* of 1 May 1877: "I will now further mention a substitute still more valuable for attaining the end we have in view. This is hens' eggs. I expressly say hens' eggs, for, though I have used ducks' eggs, I quickly gave them up; for the bees take them only with the greatest reluctance, and often not at all. I am quite unable to decide whether the flavour of the ducks' eggs in itself is distasteful to the bees, as it is to some of us when these are used as human aliment, or whether a disagreeable taste is imparted to them by the fishy nourishment which my stream offers to the ducks. It is sufficient that hens' eggs deserve the decided preference for this purpose of feeding; and they are probably cheaper and more easily obtainable. If you ask why I prefer the eggs to the milk, I answer because, taking weight and price into consideration, the amount of nutriment is greater in the eggs than in the milk: thus a considerable quantity of nourishment may be given to the bees in a small compass. In other words, a thaler's worth of milk does not represent the same amount of nutritive value as a thaler's worth of eggs."